

STRONGBACK DF or SPF #2	STRONGBACK O.C. SPACING CHART		
SPAN (ft)	<28'	28'-40'	41'-56'
# OF ROWS ROOF	1	2	3
# OF ROWS FLOOR	1	2	N/A

MAXIMUM ON CENTER SPACING OF BRIDGING IS 14'-0"
 THIS BRACING MATERIAL IS INTEGRAL TO THE PERFORMANCE OF THE TRUSS AND IS TO BE CONSIDERED PERMANENT.
 STRONGBACK BRACING IS TO BE INSTALLED AT TIME OF TRUSS PLACEMENT AND PRIOR TO THE INSTALLATION OF THE SHEATHING.

STRONGBACK INSTALLATION DETAIL

DATE: 06/25/15
REVISIONS
1 - 02/20/16 PER APPROVED SHOP DWGS

LAS TUNAS REGENCY
 416 EAST LAS TUNAS
 SAN GABRIEL, CALIFORNIA 91776

ENGINEER: ANF 626-448-9182
 ARCHITECT: MCKENTLYN MALCOLM ARCHITECTS 626-552-9248
 CUSTOMER: PABON CONSTRUCTION 626-953-3863

REVISED FOR CONSTRUCTION

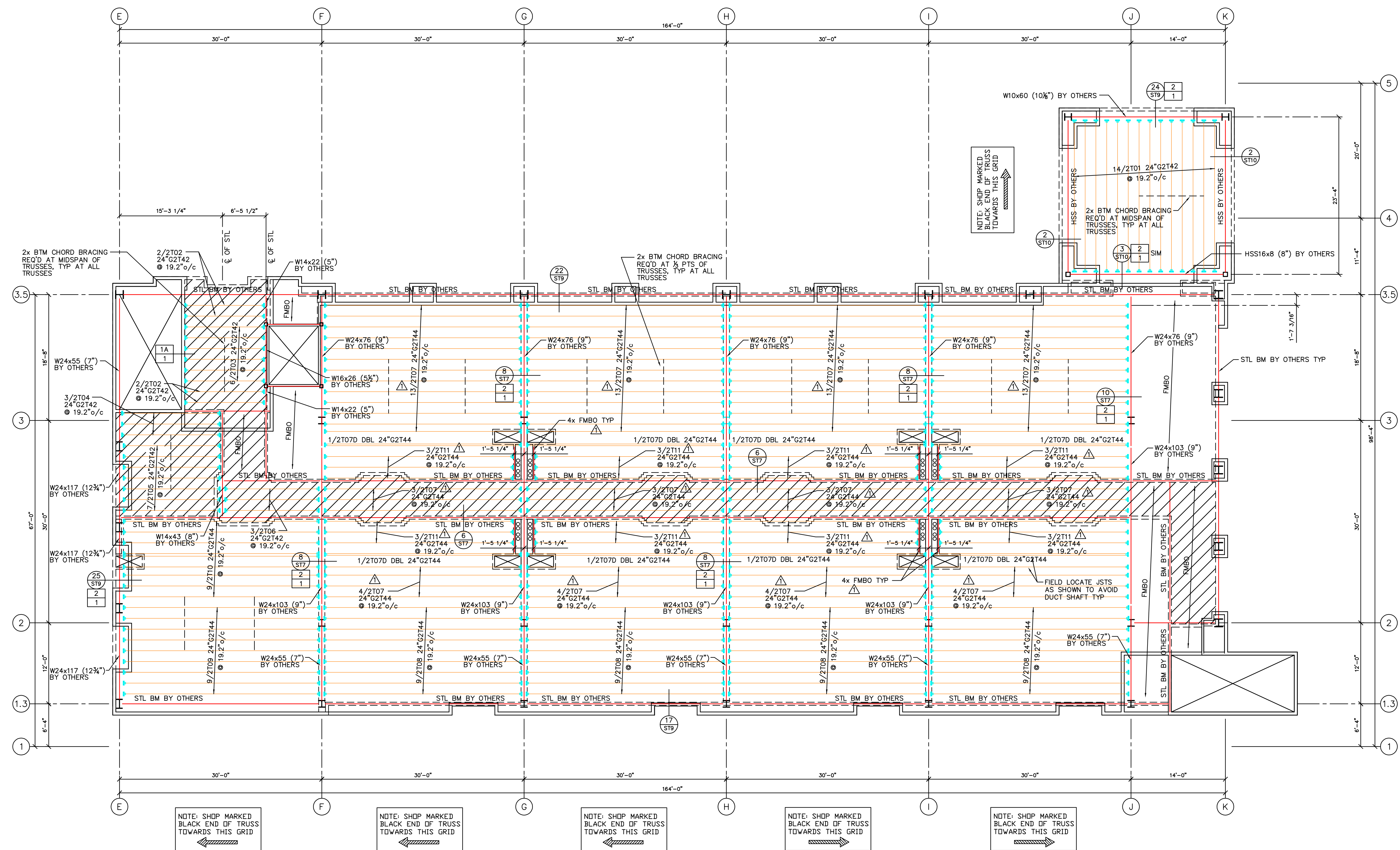


PROJECT PLANS USED:		
SHEETS	DATE	
ARCHITECTURAL DRAWINGS		
A100 THRU A807	03/31/14	▲
STRUCTURAL DRAWINGS		
ST0 THRU S15.0	04/17/15	▲
MECHANICAL DRAWINGS		
M100 THRU M231	03/31/14	▲

DESIGN LOADS			
	FLOOR	CORR.	
LIVE LOAD	40	100	PSF
PART LOAD	-	-	PSF
DEAD LOAD	25	25	PSF
TOTAL LOAD	65	125	PSF

DESIGN DEFLECTION @ FLR:
 $\Delta_{LL} \leq L/600$ $\Delta_{LL} \leq L/240$
DESIGN DEFLECTION @ CORR:
 $\Delta_{LL} \leq L/360$ $\Delta_{LL} \leq L/240$
LOAD DURATION FACTOR = 1.00

DATE	REVISIONS
06/25/15	
02/20/16	PER APPROVED SHOP DWGS



MISC. MATERIAL LIST		
ITEM	QTY.	USE
HTR424 HGRS	398	STD G2T HANGERS
RAI424-2 HGRS	16	STD DBL G2T HANGERS

G2T TRUSS LIST						
TYPE	QTY.	CLR SPAN	MFR LENGTH	DEPTH	HANGER (BLACK END)	HANGER (OTHER END)
2T01	14	22'-6 15/16"	22'-6 7/16"	24"G2T42	HTR424 HGRS	HTR424 HGRS
2T02	4	11'-10 1/4"	11'-9 3/4"	24"G2T42	HTR424 HGRS	HTR424 HGRS
2T03	6	11'-10"	11'-9 1/2"	24"G2T42	HTR424 HGRS	HTR424 HGRS
2T04	3	14'-7 3/4"	14'-7 1/4"	24"G2T42	HTR424 HGRS	HTR424 HGRS
2T05	7	14'-4 7/8"	14'-4 3/8"	24"G2T42	HTR424 HGRS	HTR424 HGRS
2T06	3	14'-0 1/4"	13'-11 3/4"	24"G2T42	HTR424 HGRS	HTR424 HGRS
2T07	80	29'-3"	29'-2 1/2"	24"G2T44	HTR424 HGRS	HTR424 HGRS
2T07D	8	29'-3"	29'-2 1/4"	24"G2T44 DBL	RAI424-2 HGRS	RAI424-2 HGRS
2T08	36	29'-5"	29'-4 1/2"	24"G2T44	HTR424 HGRS	HTR424 HGRS
2T09	9	29'-2 1/8"	29'-1 5/8"	24"G2T44	HTR424 HGRS	HTR424 HGRS
2T10	9	29'-1 1/8"	29'-0 5/8"	24"G2T44	HTR424 HGRS	HTR424 HGRS
2T11	24	28'-0 1/2"	28'-0"	24"G2T44	HTR424 HGRS	HTR424 HGRS

WARNING:
Drilling, sawing, sanding or machining wood products generates wood dust, a substance known to the State of California to cause cancer. Avoid inhaling wood dust or use a dust mask or other safeguards for personal protection.

LAS TUNAS REGENCY
416 EAST LAS TUNAS
SAN GABRIEL, CALIFORNIA 91776

REVISOR FOR CONSTRUCTION

ENGINEER: ANF 625-448-9182
ARCHITECT: MCKENTLY MALAC ARCHITECTS 625-552-9348
CUSTOMER: PABON CONSTRUCTION 625-953-3883

G2 NATIONAL
Evolution in Wood-Frame Structure.
NATIONAL, CA
2785 GREEN VISTA DRIVE # 212 SPARKS, NEVADA 89431

SHEET 2 OF 4

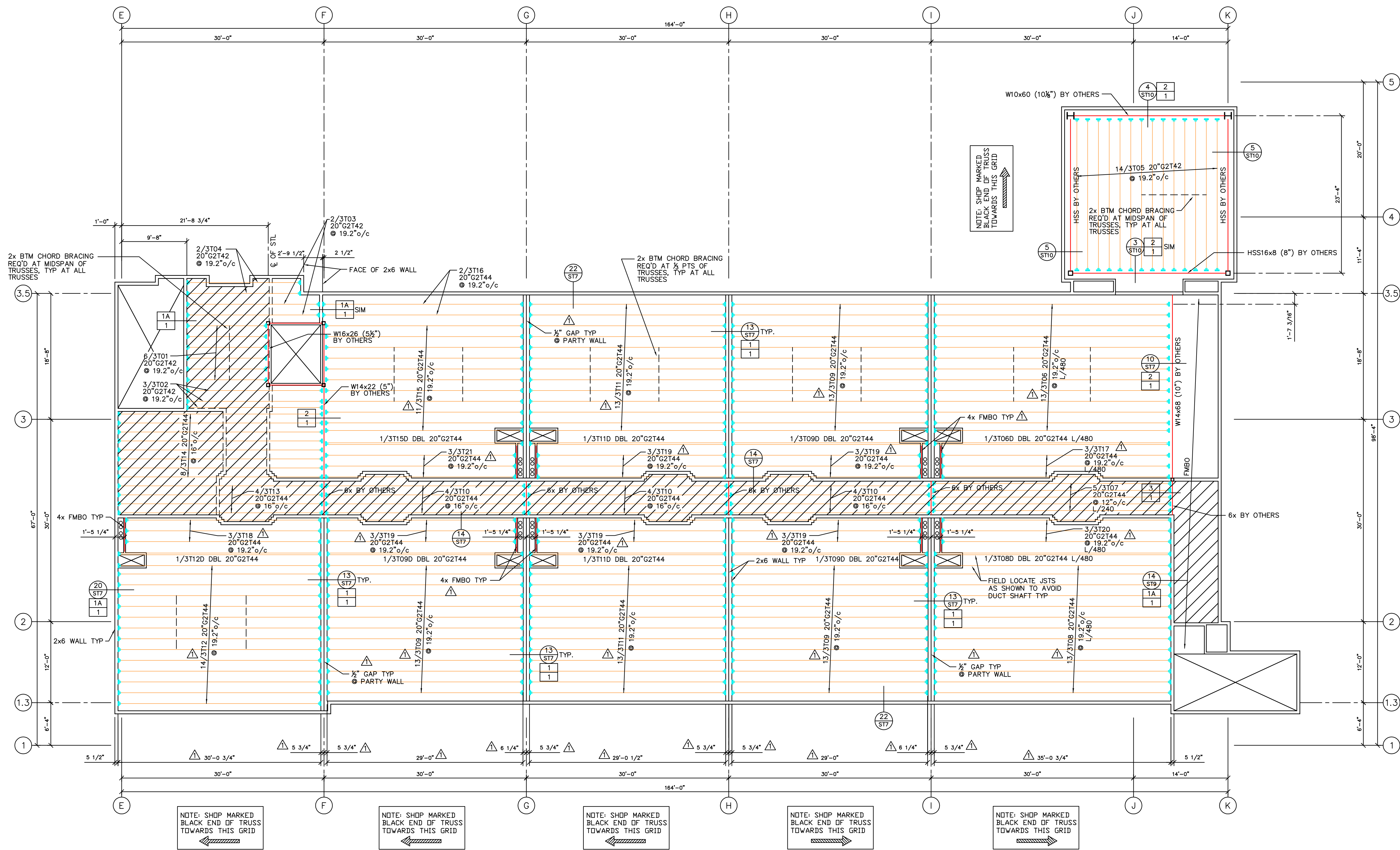
DESIGN LOADS			
	FLOOR	CORR	
LIVE LOAD	40	300	PSF
PART LOAD	-	-	PSF
DEAD LOAD	25	25	PSF
TOTAL LOAD	65	325	PSF

DESIGN DEFLECTION @ FLR:
 $\Delta_{LL} \leq L/600$ $\Delta_{TL} \leq L/240$
DESIGN DEFLECTION @ CORR:
 $\Delta_{LL} \leq L/360$ $\Delta_{TL} \leq L/240$
LOAD DURATION FACTOR = 1.00

LAS TUNAS REGENCY
 416 EAST LAS TUNAS
 SAN GABRIEL, CALIFORNIA 91776

ENGINEER: ANF 626-448-9182
 ARCHITECT: MCKENTLYN MALAC ARCHITECTS
 CUSTOMER: G2 NATIONAL LLC
 PABON CONSTRUCTION 626-953-3853

REVISED FOR CONSTRUCTION



Third Level Placement Plan

SCALE: 1/8"=1'-0"

G2T TRUSS LIST						
TYPE	QTY.	CLR SPAN	MFR LENGTH	DEPTH	HANGER (BLACK END)	HANGER (OTHER END)
3T14	8	30'-4"	30'-3 1/2"	20"G2T44	MTR420 HGRS	MTR420 HGRS
3T15	11	29'-3 1/4"	29'-2 3/4"	20"G2T44	MTR420 HGRS	MTR420 HGRS
3T15D	1	29'-3 1/4"	29'-2 1/2"	20"G2T44 DBL	RAI420-2 HGRS	RAI420-2 HGRS
3T16	2	29'-8 1/4"	29'-7 3/4"	20"G2T44	MTR420 HGRS	MTR420 HGRS
3T17	3	33'-9 1/4"	33'-8 3/4"	20"G2T44	MTR420 HGRS	MTR420 HGRS
3T18	3	28'-11 1/4"	28'-10 3/4"	20"G2T44	MTR420 HGRS	MTR420 HGRS
3T19	15	27'-11 1/4"	27'-10 3/4"	20"G2T44	MTR420 HGRS	MTR420 HGRS
3T20	3	33'-11 1/2"	33'-11"	20"G2T44	MTR420 HGRS	MTR420 HGRS
3T21	3	28'-2 1/2"	28'-2"	20"G2T44	MTR420 HGRS	MTR420 HGRS

G2T TRUSS LIST						
TYPE	QTY.	CLR SPAN	MFR LENGTH	DEPTH	HANGER (BLACK END)	HANGER (OTHER END)
3T01	6	11'-10"	11'-9 1/2"	20"G2T42	MTR420 HGRS	MTR420 HGRS
3T02	3	20'-1 1/2"	20'-1"	20"G2T42	MTR420 HGRS	MTR420 HGRS
3T03	2	19'-8"	19'-7 1/2"	20"G2T42	MTR420 HGRS	MTR420 HGRS
3T04	2	16'-10 1/2"	16'-10"	20"G2T42	MTR420 HGRS	MTR420 HGRS
3T05	14	22'-6 15/16"	22'-6 7/16"	20"G2T42	MTR420 HGRS	MTR420 HGRS
3T06	13	34'-10 1/2"	34'-10"	20"G2T44	MTR420 HGRS	MTR420 HGRS
3T06D	1	34'-10 1/2"	34'-9 3/4"	20"G2T44 DBL	RAI420-2 HGRS	RAI420-2 HGRS
3T07	5	35'-0 3/4"	35'-3 1/4"	20"G2T44	MTR420 HGRS	MTR420 HGRS
3T08	13	35'-0 3/4"	35'-0 1/4"	20"G2T44	MTR420 HGRS	MTR420 HGRS
3T08D	1	35'-0 3/4"	35'-0"	20"G2T44 DBL	RAI420-2 HGRS	RAI420-2 HGRS
3T09	39	29'-0"	28'-11 1/2"	20"G2T44	MTR420 HGRS	MTR420 HGRS
3T09D	3	29'-0"	28'-11 1/4"	20"G2T44 DBL	RAI420-2 HGRS	RAI420-2 HGRS
3T10	12	29'-6 1/2"	29'-6"	20"G2T44	MTR420 HGRS	MTR420 HGRS
3T11	26	29'-0 1/2"	29'-0"	20"G2T44	MTR420 HGRS	MTR420 HGRS
3T11D	2	29'-0 1/2"	28'-11 3/4"	20"G2T44 DBL	RAI420-2 HGRS	RAI420-2 HGRS
3T12	14	30'-0 3/4"	30'-0 1/4"	20"G2T44	MTR420 HGRS	MTR420 HGRS
3T12D	1	30'-0 3/4"	30'-0"	20"G2T44 DBL	RAI420-2 HGRS	RAI420-2 HGRS
3T13	4	30'-3 3/4"	30'-3 1/4"	20"G2T44	MTR420 HGRS	MTR420 HGRS

MISC. MATERIAL LIST		
ITEM	QTY.	USE
MTR420 HGRS	410	STD G2T HANGERS
RAI420-2 HGRS	18	STD DBL G2T HANGERS

WARNING:
 Drilling, sawing, sanding or machining wood products generates wood dust, a substance known to the State of California to cause cancer. Avoid inhaling wood dust or use a dust mask or other safeguards for personal protection.

DESIGN LOADS	
	ROOF
LIVE LOAD	20 PSF
PART LOAD	- PSF
DEAD LOAD	16 PSF
TOTAL LOAD	36 PSF

DESIGN DEFLECTION:
 $\Delta_{LL} \leq L/360$ $\Delta_{TL} \leq L/180$
 LOAD DURATION FACTOR = 1.25
 W/ 500# POINT LOAD AT ANY POINT
 BASIC WIND SPEED (3 SECOND GUST)
 $V_{3s} = 85$ MPH

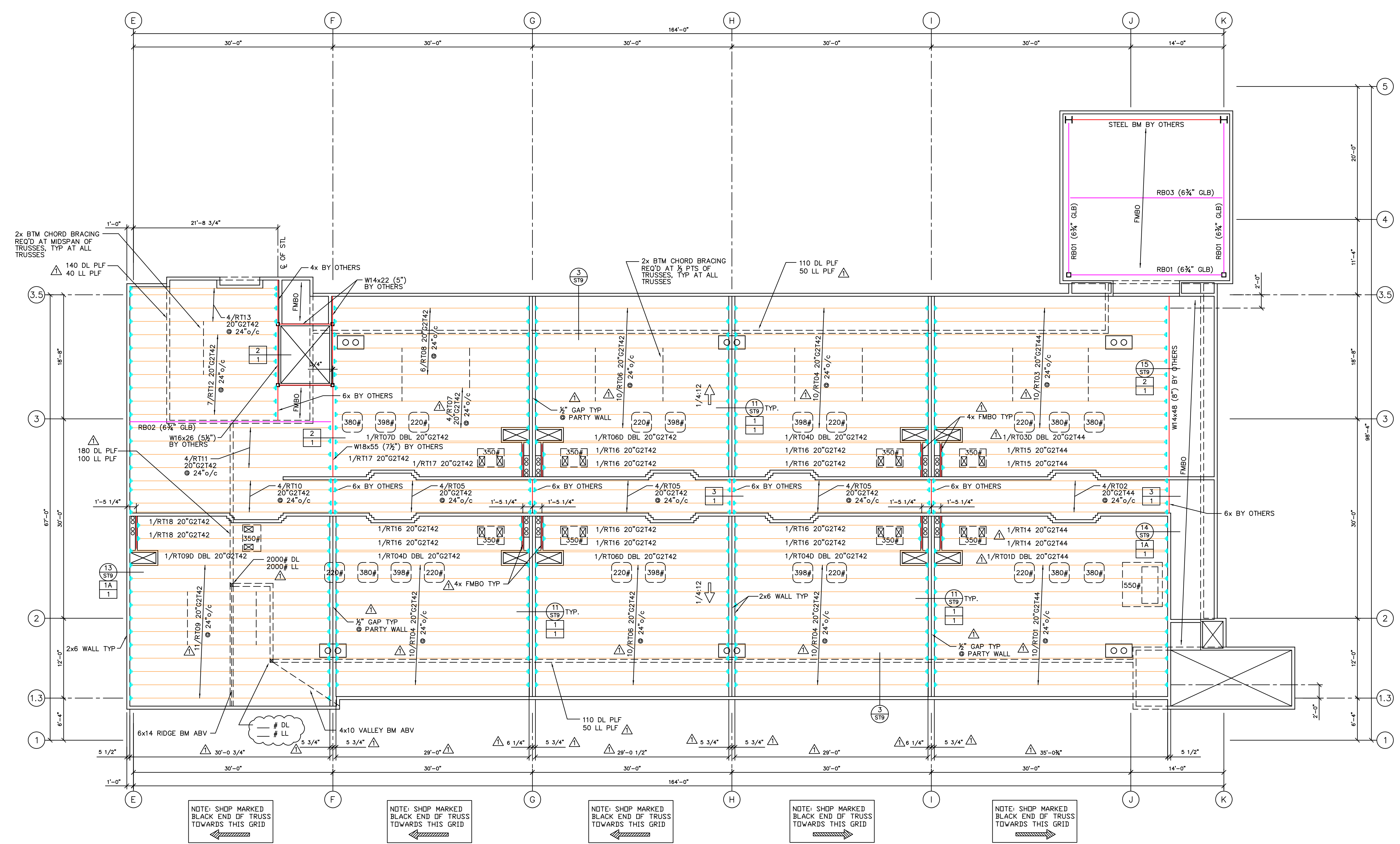
DATE: 06/25/15

REVISIONS
1 - 02/20/16 PER APPROVED SHOP DWGS

LAS TUNAS REGENCY
 416 EAST LAS TUNAS
 SAN GABRIEL, CALIFORNIA 91776

ENGINEER: ANF 626-448-9182
 ARCHITECT: MCKENTLYN MALAC ARCHITECTS 626-552-9348
 CUSTOMER: PABON CONSTRUCTION 626-963-3863

G2 NATIONAL
 Evolution in Wood-Framed Structures.
 2765 GREEN VISTA DRIVE # 212 SPARKS, NEVADA 89431



NOTE: SHOP MARKED BLACK END OF TRUSS TOWARDS THIS GRID

NOTE: SHOP MARKED BLACK END OF TRUSS TOWARDS THIS GRID

NOTE: SHOP MARKED BLACK END OF TRUSS TOWARDS THIS GRID

NOTE: SHOP MARKED BLACK END OF TRUSS TOWARDS THIS GRID

NOTE: SHOP MARKED BLACK END OF TRUSS TOWARDS THIS GRID

Roof Placement Plan

SCALE: 1/8"=1'-0"

24F-V4 INDUSTRIAL APPEARANCE UNO 14% MOISTURE CONTENT					
QTY	MARK	WIDTH	DEPTH	LENGTH	CAMBER
3	RB01	6 3/4	21	24'-0"	1/2"
1	RB02	6 3/4	18	31'-6"	1 1/2"
1	RB03	6 3/4	13 1/2	24'-0"	1"

G2T TRUSS LIST						
TYPE	QTY.	CLR SPAN	MFR LENGTH	DEPTH	HANGER (BLACK END)	HANGER (OTHER END)
RT13	4	22'-1 1/2"	22'-1"	20"G2T42	MTR420 HGRS	MTR420 HGRS
RT14	2	33'-11 1/2"	33'-11"	20"G2T44	MTR420 HGRS	MTR420 HGRS
RT15	2	33'-10 1/4"	33'-9 3/4"	20"G2T44	MTR420 HGRS	MTR420 HGRS
RT16	10	27'-11 1/4"	27'-10 3/4"	20"G2T42	MTR420 HGRS	MTR420 HGRS
RT17	2	28'-1 1/4"	28'-0 3/4"	20"G2T42	MTR420 HGRS	MTR420 HGRS
RT18	2	28'-11 1/4"	28'-10 3/4"	20"G2T42	MTR420 HGRS	MTR420 HGRS

MISC. MATERIAL LIST		
ITEM	QTY.	USE
MTR420 HGRS	292	STD G2T HANGERS
RAI420-2 HGRS	18	STD DBL G2T HANGERS

G2T TRUSS LIST						
TYPE	QTY.	CLR SPAN	MFR LENGTH	DEPTH	HANGER (BLACK END)	HANGER (OTHER END)
RT01	10	35'-0 3/4"	35'-0 1/4"	20"G2T44	MTR420 HGRS	MTR420 HGRS
RT01D	1	35'-0 3/4"	35'-0"	20"G2T44 DBL	RAI420-2 HGRS	RAI420-2 HGRS
RT02	4	35'-3 3/4"	35'-3 1/4"	20"G2T44	MTR420 HGRS	MTR420 HGRS
RT03	10	34'-11 1/2"	34'-11"	20"G2T44	MTR420 HGRS	MTR420 HGRS
RT03D	1	34'-11 1/2"	34'-10 3/4"	20"G2T44 DBL	RAI420-2 HGRS	RAI420-2 HGRS
RT04	30	29'-0"	28'-11 1/2"	20"G2T42	MTR420 HGRS	MTR420 HGRS
RT04D	3	29'-0"	28'-11 1/4"	20"G2T42 DBL	RAI420-2 HGRS	RAI420-2 HGRS
RT05	12	29'-6 1/2"	29'-6"	20"G2T42	MTR420 HGRS	MTR420 HGRS
RT06	20	29'-0 1/2"	29'-0"	20"G2T42	MTR420 HGRS	MTR420 HGRS
RT06D	2	29'-0 1/2"	28'-11 3/4"	20"G2T42 DBL	RAI420-2 HGRS	RAI420-2 HGRS
RT07	4	29'-2"	29'-1 1/2"	20"G2T42	MTR420 HGRS	MTR420 HGRS
RT07D	1	29'-2"	29'-1 1/4"	20"G2T42 DBL	RAI420-2 HGRS	RAI420-2 HGRS
RT08	6	29'-4"	29'-3 1/2"	20"G2T42	MTR420 HGRS	MTR420 HGRS
RT09	11	30'-0 3/4"	30'-0 1/4"	20"G2T42	MTR420 HGRS	MTR420 HGRS
RT09D	1	30'-0 3/4"	30'-0"	20"G2T42 DBL	RAI420-2 HGRS	RAI420-2 HGRS
RT10	4	30'-3 3/4"	30'-3 1/4"	20"G2T42	MTR420 HGRS	MTR420 HGRS
RT11	4	30'-2 3/4"	30'-2 1/4"	20"G2T42	MTR420 HGRS	MTR420 HGRS
RT12	7	22'-0 1/2"	22'-0"	20"G2T42	MTR420 HGRS	MTR420 HGRS

WARNING:
 Drilling, sawing, sanding or machining wood products generates wood dust, a substance known to the State of California to cause cancer. Avoid inhaling wood dust or use a dust mask or other safeguards for personal protection.